

42R - 44R - 46R

1K QUICKPRIME



PRODUCT DESCRIPTION

1K QuickPrime Off White 42R / Medium Grey 44R / Dark Grey 46R is a universal Wash Primer-Surfacer and supplied in 400 ml spray cans. It is designed for small sand-throughs, including on bare metal. It is part of ValueShade, which delivers the optimal undercoat for every topcoat colour.

Universal ValueShade Wash Primer-Surfacer

FEATURES

- 01 Suitable for isolating small sand-throughs.
- 02 Available in Off White, Grey and Dark Grey.
- 03 Offers very good corrosion resistance.
- 04 Can be used as a non-sanding primer.
- 05 Part of the ValueShade concept.
- 06 Provides good etching properties on sanded ferrous metal and light alloys, except stainless steel.

TECHNICAL DATA SHEET

42R - 44R - 46R

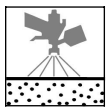
1K QUICKPRIME



Product preparation - application STANDARD



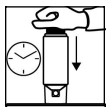
It is strongly recommended to use appropriate personal protection equipment during application to avoid respiratory, skin and eye irritation.



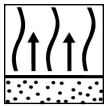
Small sanded-through spots down to the bare metal, e.g. on edges and corners.
Surfaces pretreated with 2K polyester products and then finely sanded and cleaned.
Old or original paintwork well sanded and cleaned.
OEM Primer (e-coat), sanded and cleaned



Shake before use. (for at least 2 minutes)
Make a spray test after shaking.



Not applicable

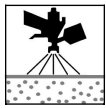


1 - 3 coats

final flash-off: 15 min - 8 hr



If desired slight denibbing with soft pad ultra-fine.



2K Surfacer
Centari Basecoats + Clearcoat
2K Topcoat

VOC compliant

2004/42/IIB(e)(840) 695: The EU limit value for this product (product category: IIB(e)) in ready to use form is maximum 840 g/l of VOC. The VOC content of this product in ready to use form is maximum 695 g/l.

TECHNICAL DATA SHEET

42R - 44R - 46R

1K QUICKPRIME

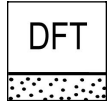


Products

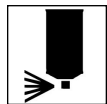
42R 1K QuickPrime - VS2

44R 1K QuickPrime - VS4

46R 1K QuickPrime - VS6



8 - 10 µm per coat



After use, hold aerosol can upside down and spray briefly to clean nozzle.

Remarks

- Material has to be at room temperature (18-25°C) before use.
- Do not recoat with polyester-, epoxy- or waterborne products.

Consult Safety Data Sheet prior to use. Observe the precautionary notices displayed on the container.

All other products referred to in the refinish build up are from our Cromax product range. System properties will not be valid when the related material is used in combination with any other materials or additives which are not part of our Cromax product range, unless explicitly indicated otherwise.

For professional use only! The information provided in this documentation has been carefully selected and arranged by us. It is based upon our best knowledge on the subject at the date of issuance. The Information is given for information purposes only. We are not liable for its correctness, accuracy and completeness. It is up to the user to check the information with regard to up-to-dateness and suitability for his intended purpose. The intellectual property in this Information, including patents, trademarks and copyrights, is protected. All rights reserved. The relevant Material Safety Data Sheet and Warnings displayed on the product label need to be observed. We may modify and/ or discontinue operation of all or portions of this Information at any time in our sole discretion, without notice and assume no responsibility to update the Information. All rules set forth in this clause shall apply accordingly for any future changes and amendments.